

**Thrash212****Thrash215**

## THRASH

### 1300W Powered Loudspeaker Series

Mackie Thrash loudspeakers are all about no frills, raw power, and reliability without sacrificing sound quality.

Built on a legacy of legendary loudspeaker design, Thrash is voiced for modern musicians, loud vocals, screaming guitars, and face-melting keytar solos.

With a wall-shaking 1300W of power, Thrash has what it takes to keep up with every gig, rehearsal, you name it.

Flexible I/O includes two inputs plus a Mix Out for chaining speakers or hooking up a powered subwoofer.

Thrash is the ultimate start to building your own gig-worthy PA system, so throw it in the van and let's do this.

### APPLICATIONS:

Singer-songwriters, announcement PA, karaoke, clubs / cafés, houses of worship, schools, small restaurants, outdoor events / barbecues, banquet halls, conference rooms, boardrooms, and many, many more.

### FEATURES:

- 1300W ultra-efficient Class-D amplifier
- Built-Like-A-Tank™ to conquer every gig while lightweight for easy loading
- Frequency response: 52 Hz – 20 kHz (-10 dB) [Thrash212]
- Frequency response: 38 Hz – 20 kHz (-10 dB) [Thrash215]
- Max SPL: 125 dB [Thrash212]
- Max SPL: 126 dB [Thrash215]
- Flexible I/O
  - Inputs 1 and 2 feature XLR/TRS combo inputs
  - Inputs accept both line and mic level
  - Mix output contains audio from both input channels
- 12" high-performance woofer [Thrash212]
- 15" high-performance woofer [Thrash215]
- 1" Titanium compression driver
- Standard pole mount
- Equipped with 4 handles for easy loading
- Dual-angle monitor wedge for use as a floor monitor
- Rotatable grille badge

## THRASH SPECIFICATIONS

### Acoustic Performance

Frequency Response (-10 dB)	52 Hz – 20 kHz [Thrash212]
	38 Hz – 20 kHz [Thrash215]
Frequency Response (-3 dB)	65 Hz – 20 kHz [Thrash212]
	55 Hz – 20 kHz [Thrash215]
Horizontal Coverage	90°
Vertical Coverage	60°
Maximum SPL Peak	125 dB [Thrash212]
	126 dB [Thrash215]
Monitor Angle	45°

### Transducers

Low Frequency	12 in / 305 mm [Thrash212]
	15 in / 381 mm [Thrash215]
	with ferrite
High Frequency	1.0 in / 25 mm titanium high frequency driver

### Power Amplifiers

System Power Amplification	
Rated Power	1300 watts peak
Low Frequency Power Amplifier	
Rated Power	1000 watts peak
Rated THD	<1%
Cooling Design	Convection Class D
High Frequency Power Amplifier	
Rated Power	300 watts peak
Rated THD	<1%
Cooling Design	Convection Class D

### Input / Output

Input Type	2x Female XLR – 1/4" Balanced TRS combo jack
Mic Impedance	20 kΩ Balanced
Line Impedance	1 MΩ Unbalanced Hi-Z
Mix Out	Male XLR Balanced
Mix Out Impedance	600 Ω Balanced

### Electronic Crossover

Crossover Type	24 dB / octave
Crossover Frequency	2.4 kHz

### Line Input Power

Detachable line cord	100 – 240 VAC, 50 – 60 Hz, 75W
AC Connector	3-Pin IEC 250 VAC, 10 A male
Power Supply Type	Switchmode

### Safety Features

Input Protection	Peak and RMS limiting, power supply and amplifier thermal protection
Display LED	Rear panel power / overload

### Mounting Methods:

Floor mount, pole mount via the built-in socket on the bottom of the cabinet [Be sure the pole is capable of supporting the weight of the loudspeaker]. There are no rigging points and they are NOT suitable for rigging. Do not suspend a Thrash loudspeaker by its handles.

### Physical Properties (product)

#### THRASH212:

Height:	26.4 in / 669 mm
Width:	14.8 in / 375 mm
Depth:	12.3 in / 313 mm
Weight:	36.4 lb / 16.5 kg

#### THRASH215:

Height:	28.0 in / 711 mm
Width:	17.1 in / 434 mm
Depth:	14.3 in / 363 mm
Weight:	40.8 lb / 18.5 kg

## THRASH SPECIFICATIONS CONTINUED...

### Physical Properties (packaged product)

**THRASH212:**

Height:	30.4 in / 772 mm
Width:	17.6 in / 447 mm
Depth:	15.4 in / 391 mm
Weight:	40.8 lb / 18.5 kg

**THRASH215:**

Height:	31.9 in / 810 mm
Width:	20.0 in / 508 mm
Depth:	17.2 in / 437 mm
Weight:	45.2 lb / 20.5 kg

### Options

T100 Loudspeaker Tripod Stand	P/N 2052464
SPM200 Loudspeaker Pole Mount	P/N 2035170

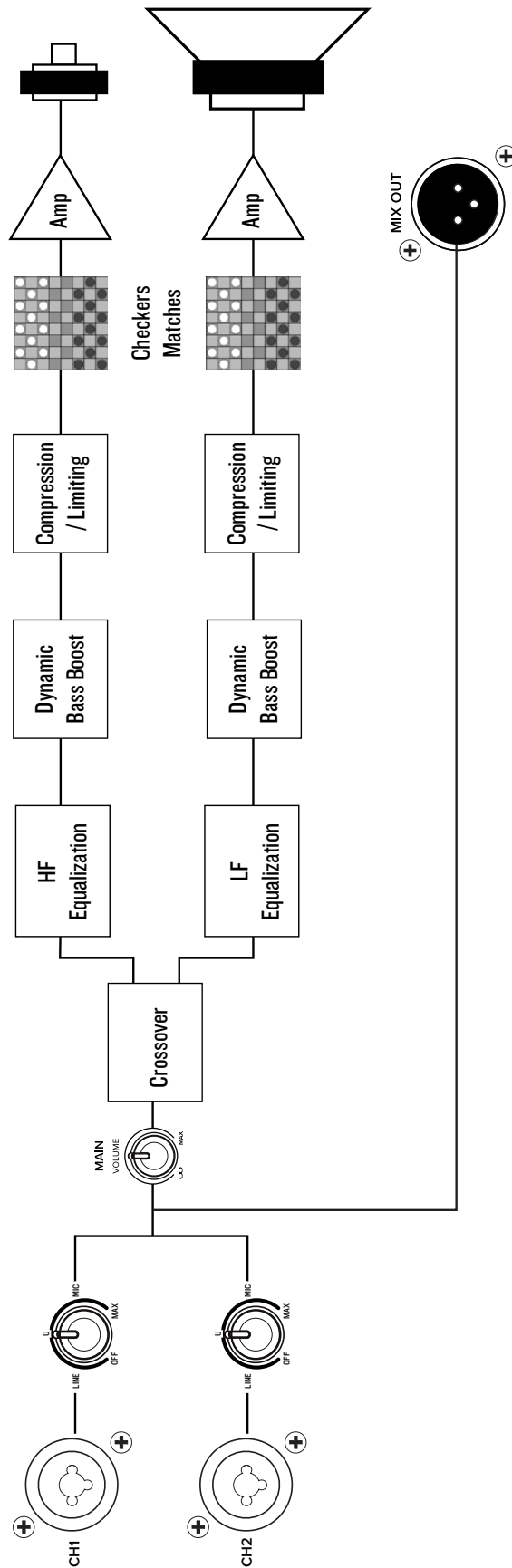
### Ordering Information

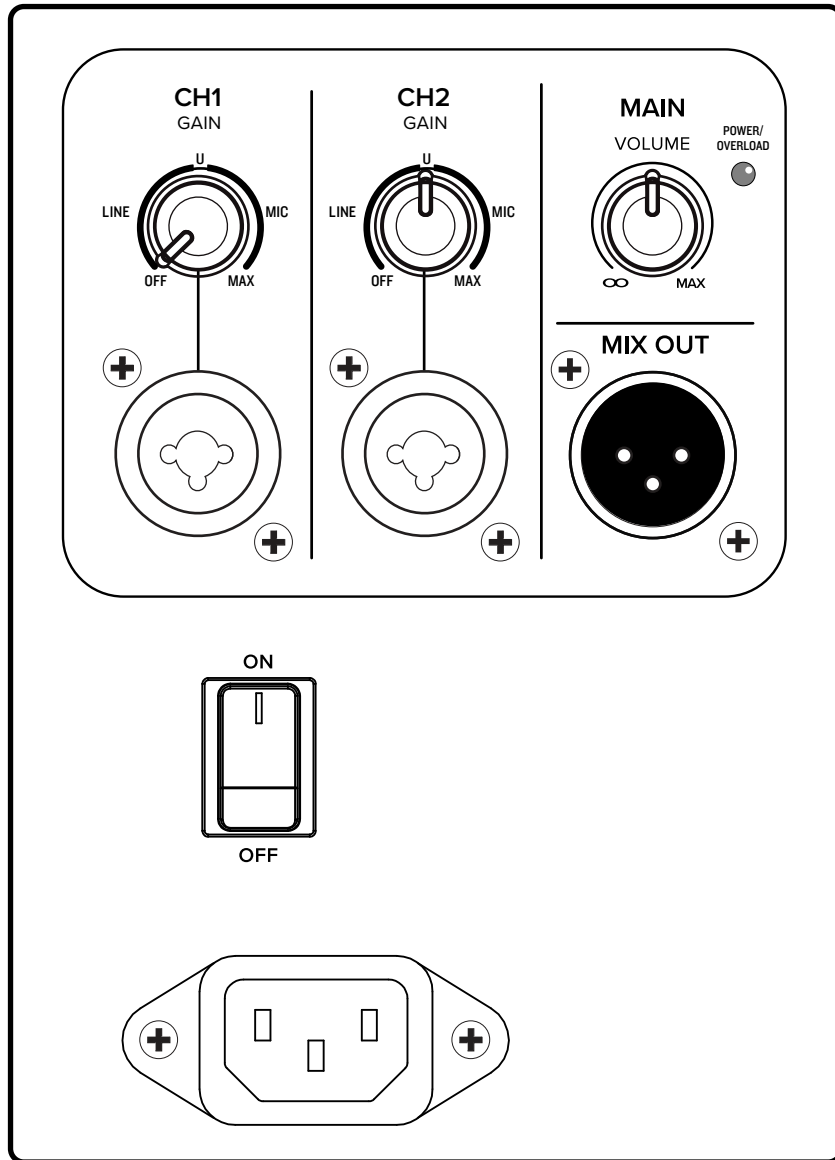
**THRASH212 – 12" 1300W Powered Loudspeaker**

P/N 2054320-00 (US)
P/N 2054320-01 (EU)
P/N 2054320-03 (UK)
P/N 2054320-04 (AU)
P/N 2054320-05 (CN)
P/N 2054320-06 (BZ ~120V)
P/N 2054320-16 (BZ ~230V)
P/N 2054320-07 (AR)
P/N 2054320-08 (KR)

**THRASH215 – 15" 1300W Powered Loudspeaker**

P/N 2054321-00 (US)
P/N 2054321-01 (EU)
P/N 2054321-03 (UK)
P/N 2054321-04 (AU)
P/N 2054321-05 (CN)
P/N 2054321-06 (BZ ~120V)
P/N 2054321-16 (BZ ~230V)
P/N 2054321-07 (AR)
P/N 2054321-08 (KR)

**THRASH BLOCK DIAGRAM**


**THRASH LOUDSPEAKER REAR PANEL**


Electronic files for this product are available at:  
[www.mackie.com](http://www.mackie.com)

Specification Sheet

THRASH\_SS.PDF

Owner's Manual

THRASH\_OM.PDF

LOUD Audio, LLC. is always striving to improve our products by incorporating new and improved materials, components, and manufacturing methods. Therefore, we reserve the right to change these specifications at any time without notice.

"Mackie" and the "Running Man" figure are registered trademarks of LOUD Audio, LLC. All other brands mentioned are trademarks or registered trademarks of their respective holders, and are hereby acknowledged.